



# ECM-30



## Sustainable Engineered Bamboo Ground Protection Matting

- ✓ **LOWER COST VS COMPOSITE**
- ✓ **RAPID INSTALLATION TIMES**
- ✓ **LOWER TRUCKING COSTS**

**CUSTOM-DESIGNED ACCESS:**

For Civil Construction, Trailer-Mounted Rigs, Site Access Roads, and Campsites.

**STREAMLINED DEPLOYMENT:**

Dedicated lifting points, no dunnage required.

**RAPID CONNECTION:**

With 4 steel-to-steel installation fixings per mat.

**STRENGTH:**

Tested 647 PSI (4,468kN/m<sup>2</sup>) exceeds composite weight loading capacity.

**DIMENSIONS:**

5.25m<sup>2</sup> (2.824m x 1.860m x 43mm) & 262kg – 33% thinner than Composite.

**COVERAGE PER CONTAINER:**

472.5m<sup>2</sup> (5,086 sqft) working area per 20ft container.


**SUSTAINABLE MATERIAL:**

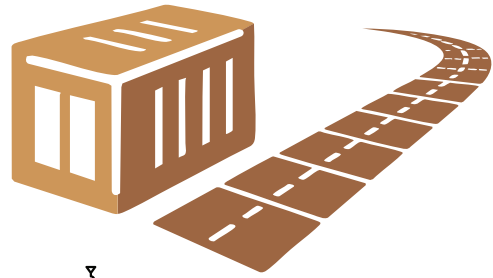
Made from Flex Weave Bamboo.




# 1 TRUCK LOAD = 472.5 SQUARE METERS

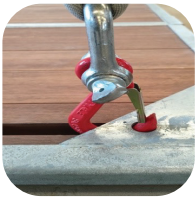


1  Container = 472.5m<sup>2</sup>

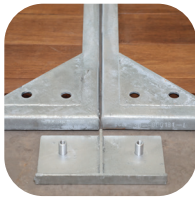


4  Container = 1km long road

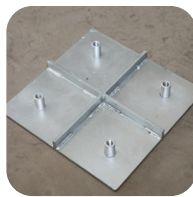
## ECM-30 SPECIALIZED FEATURES



Dedicated lifting point  
Reinforced corner gusset



2 way matting edge  
steel connector



4 way connector



4 way central connector  
4 connector screws per mat



Integral beam  
locking rib



Side pocket on site repair  
capability

Description	ECM-30	ECM Advantage	Composite
Actual Size	2.824m x 1.860m x 43mm 5.25m <sup>2</sup>	Fully Useable Area for an Efficient Operation	6.0m <sup>2</sup>
Useable Area	5.25m <sup>2</sup> (56.5 sqft)		5.30m <sup>2</sup> (57 sqft)
Weight	262kg (577 lbs)		225kg (496 lbs)
Strength	647 psi (4,468 kn/m <sup>2</sup> )	61% Stronger	400 psi (2,758 kn/m <sup>2</sup> )
Thickness	43mm (1.69 inches)	33% Thinner	64mm (2.51 inches)
Coverage / 20ft container	90 mats 472.5m <sup>2</sup> (5,086 sqft)	98% More Coverage	45 mats 238.5m <sup>2</sup> (2,567 sqft)
Connectors	4 steel to steel connectors	12 Less Connectors	16 plastic pins
Life	15 years	Chipped at Life End	15 years
Repairable on site	Yes	Modular Design	No
Buoyancy	No	Does not Float	Floats / Requires ground pins
Fire Rating	Class A ASTM E84	Does not Burn	Melts at 121 °C (240F)